

## No-Play Zones and Holes 8, 10 & 15

The purpose of this document is to explain simply the rules concerning No-Play Zones (NPZ) and to explain some of the intricacies involved in playing holes 8, 10 and 15. For more detailed explanations refer to the Rules of Golf and the Minthis Local Rules.

**NPZs** are marked with stakes that have a GREEN top. The main rules for NPZs are simple:

- You **MUST NOT** enter a NPZ at Minthis. There is a local rule prohibiting this and violation of this rule incurs the General Penalty;
- You **MUST NOT** play a ball that has come to rest in the NPZ. You **MUST** take relief, otherwise you incur the General Penalty;
  - Relief from a BLUE NPZ incurs NO penalty;
  - Relief from a YELLOW, RED or WHITE NPZ incurs a 1-stroke penalty.
- You **MUST NOT** play a ball that is not in the NPZ but the NPZ interferes with your intended stance or swing. You **MUST** take relief, otherwise you incur the General Penalty.
  - Relief from any type NPZ incurs NO penalty;

**Hole 8** has a BLUE NPZ in front of the tee and a RED Penalty Area drainage channel behind the green. Please note that if you cannot find and identify your ball, then, unless you know or are virtually certain that your ball came to rest in the RED Penalty area it is a **LOST BALL**.

**Hole 10** has a YELLOW penalty area NPZ and Out of Bounds surrounding the rough, it also has a drop zone. In some situations you can take Back-on-the-Line relief and in others you cannot.

**Hole 15**, the island green is surrounded by a YELLOW Penalty Area NPZ whose green-side boundary is the wall surrounding the green. It has a bridge, which is in a YELLOW Penalty Area (not a NPZ), a RED Penalty Area drainage channel and out of bounds as well as a drop zone. It can be confusing knowing where to drop the ball if it ends up in the water, or if the wall interferes with your intended stance or swing, or if your ball comes to rest on the stone bridge.

In the following descriptions:

- **Stroke-and-Distance relief** is always available and means: at the expense of a 1-shot penalty, dropping your ball, normally within 1 club-length to where you last played it from (if it was played from the teeing area you may tee it up again, or simply place it). (See Rule 14.6 for more precise information).
- **Back-on-the-Line relief** is available from both yellow and red penalty areas and means: at the expense of a 1-shot penalty, dropping your ball at any point not nearer the hole along the imaginary straight line that extends from the hole past the known or estimated point where it crossed the Penalty Area boundary. (See Rule 17.1d) If it is impossible to drop along this line (*e.g. into the out-of-bounds area behind the 15<sup>th</sup> island green hole, or into the penalty area on the left-side of the 10<sup>th</sup> fairway*) then Back-on-the-Line relief cannot be taken.
- **Lateral relief** is available only from a red penalty area and means: at the expense of a 1-shot penalty, dropping your ball, no nearer the hole, within two club-lengths of the known or estimated point where your ball last crossed the edge of the red penalty area. (See Rule 17.1d)
- **General Penalty** is 2 penalty strokes in strokeplay, loss of hole in matchplay.

## No-Play\_Zones (NPZ)

No-Play Zones are denoted by colored stakes with **GREEN** tops. You are not allowed to enter a NPZ, nor can you play a ball that comes to rest in one.

### What to Do if Your Ball is in a No-Play Zone

In all four cases below you **MUST** take relief and you always have the option to take Stroke-and-Distance relief at the cost of a 1-stroke penalty.

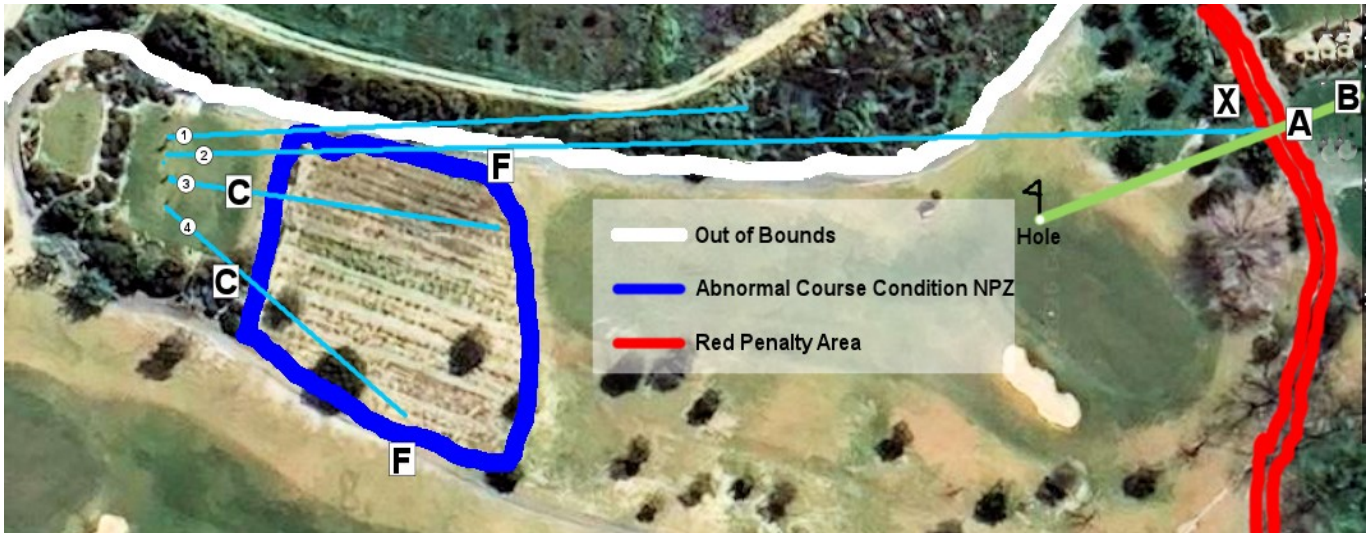
- 1) **BLUE (Abnormal Course Condition NPZ)** – You get a drop without penalty:
  - a) Drop within one club-length of the nearest point of relief from the ball;
  - b) If the ball cannot be found but it is known or it is virtually certain that it is in the NPZ, drop within one club-length of the nearest point of relief from the point where it crossed the NPZ boundary.
- 2) **RED (Penalty Area NPZ)** – You get a drop with a 1-stroke penalty:
  - a) Back-on-the-Line relief, if it is possible;
  - b) Lateral relief.
- 3) **YELLOW (Penalty Area NPZ)** – You get a drop with a 1-stroke penalty:
  - a) Back-on-the-Line relief. If this is not possible (*e.g. the penalty area on the left-side of the 10<sup>th</sup> fairway*) then Stroke-and-Distance relief or a Drop Zone (if one is provided) are your only options;
- 4) **WHITE (Out of Bounds No-Play Zone)** – Stroke-and-Distance relief is your **ONLY** option, incurring a 1-stroke penalty.

### What to Do if Your Ball is NOT in the No-play Zone but it Interferes with your Intended Stance or Swing

In all 4 cases (Blue, Yellow, Red and White) you **MUST** take relief and you have the following options:

- drop the ball without penalty not nearer the hole, within one club-length of the nearest point of relief from the ball
- take Stroke-and-Distance relief incurring a 1-stroke penalty
- declare the ball unplayable incurring a 1-stroke penalty.

## Options for Relief on the 8<sup>th</sup> Hole



In the above diagram of Hole 8, the trajectories (cyan coloured lines) of four balls are shown, as is the BLUE Abnormal Course Condition No-Play Zone, designated by Blue stakes with a Green top, the RED penalty area and the Out of Bounds (shown in white).

### Ball 1

Ball 1 landed Out of Bounds. The only option for relief, which incurs a 1-shot penalty is:

- Stroke-and-Distance relief. You may tee up the ball.

### Ball 2

Ball came to rest in the drainage channel behind the green.

If the ball cannot be found and identified and no-one saw it come to rest in the drainage channel then you cannot know or be virtually certain that it is in the channel, in which case it is a lost ball and the only option for relief, which incurs a 1-shot penalty is:

- Stroke-and-Distance relief. (Hopefully a provisional ball was played from the tee).

Otherwise the options for relief, all of which incur a 1-shot penalty are:

- Lateral relief at the known or estimated point where it crossed the RED Penalty Area boundary (marked X). If the wall of the drainage channel then interferes with your intended stance or swing you may drop again within ONE club-length of the nearest point of relief from the ball that is not nearer the hole;
- Back-on-the-Line relief, which in this case is along the line segment A-B in the vine area that is in front of the 2<sup>nd</sup> tee.;
- Stroke-and-Distance relief.

### Balls 3 & Ball 4

Balls 3 and 4 came to rest in the BLUE Abnormal Course Condition NPZ that is the vines in front of the 8<sup>th</sup> tee. Please note that you are not allowed to enter into nor play from a NPZ.

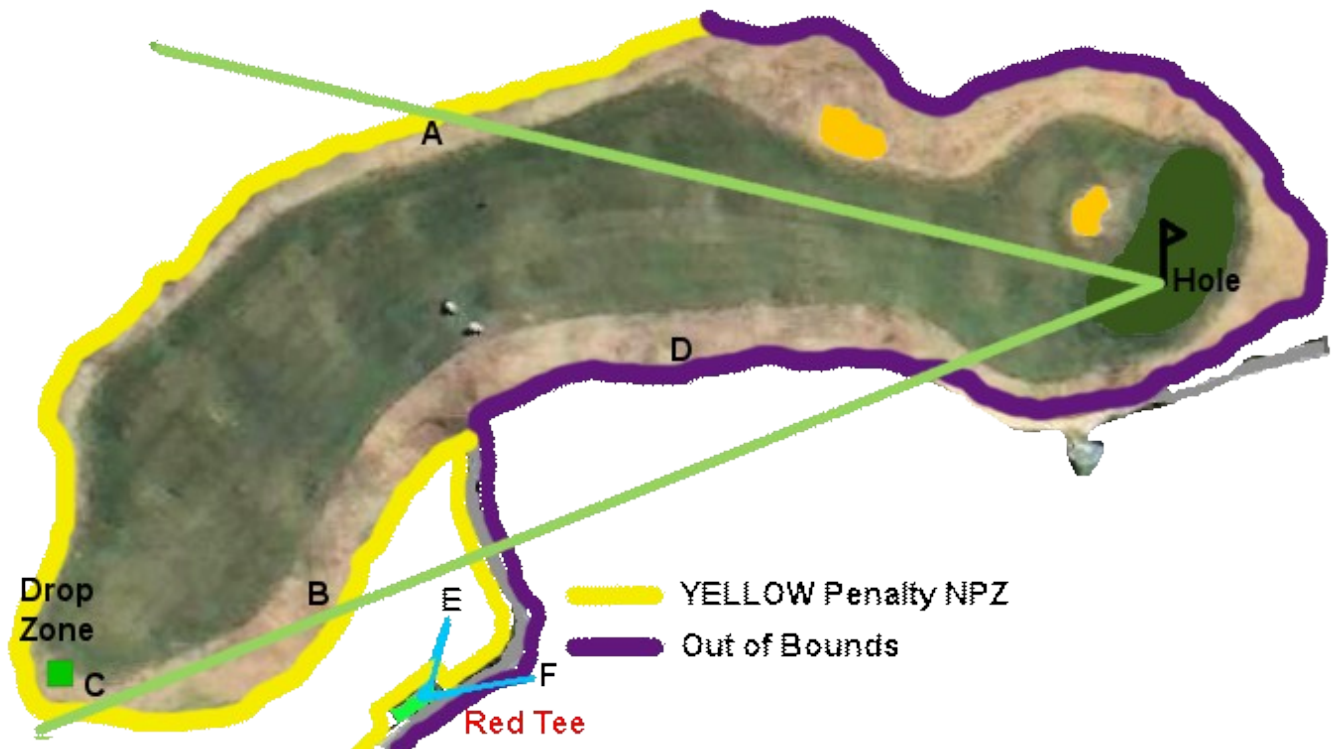
The only option for relief without incurring a penalty is:

- Drop the ball within one club-length of the nearest point of relief;

The nearest point of relief depends upon whether or not you found and identified your ball in the blue NPZ.

- If you find and identify your ball then the reference point for the nearest point of relief is the ball itself. In the diagram above this situation is indicated by “F” (for “found”) on or by the side of the 8<sup>th</sup> path and 7<sup>th</sup> path. If you drop on the path and the ball stays on the path, or the path interferes with your intended stance or swing you have the option to play it as it lies or take free relief;
- If you cannot find and identify your ball then the reference point for the nearest point of relief is the known or estimated point where it crossed the Blue NPZ boundary. In the diagram above this situation is indicated by “C” (for “crossed”). Note that, depending on where this point is, you will probably have to drop on the slope in front of the tee, rather than on the flat surface of the tee itself.

## The Yellow Penalty Area No-Play Zone (NPZ) on the 10<sup>th</sup> Hole



In the above diagram of Hole 10, A and B are the points at which two balls entered the Penalty Area No-Play Zone, designated by Yellow stakes with a Green top. Point D is where a ball entered the Out of Bounds area and points E and F are the location of balls played from the Red tee.

### Point A and Point E

The points below also apply to a ball played from the tee that fails to reach the Yellow NPZ shown and is not out of bounds.

The only options for relief for the ball E and the ball that entered the penalty area NPZ at point A, all of which incur a 1-shot penalty are:

- Drop the ball in the Drop Zone;
- Stroke-and-Distance relief.

Back-on-the-Line relief is NOT an option for point A, since to do so you would only be able to drop the ball back in the Penalty Area NPZ itself.

### Point B

The options for relief for the ball that entered the penalty area NPZ at point B, all of which incur a 1-shot penalty are:

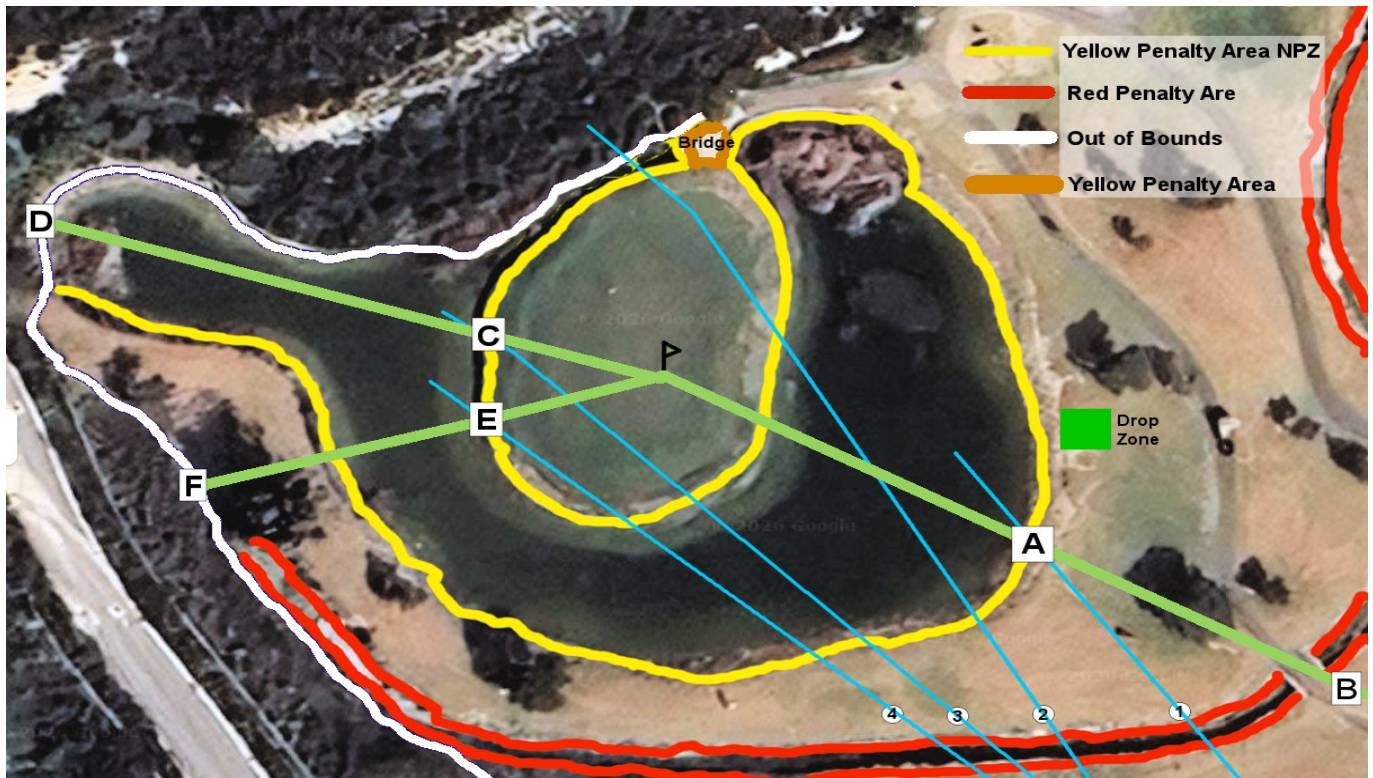
- Back-on-the-Line relief, dropping the ball on the imaginary line segment B-C;
- Drop the ball in the Drop Zone;
- Stroke-and-Distance relief.

### Point D and point F

The only options for relief for the balls that entered the out of bounds is:

- Stroke-and-Distance relief.

## Options for Relief on the 15<sup>th</sup> Hole



In the above diagram of Hole 15, the trajectories (cyan coloured lines) of four balls are shown, as is the Yellow Penalty Area No-Play Zone, designated by Yellow stakes with a Green top, the Red penalty area, the Yellow Penalty area (shown in light brown) and the Out of Bounds.

### Ball 1

Ball 1 landed directly in the water of the Yellow Penalty Area NPZ. The options for relief, all of which incur a 1-shot penalty are:

- Back-on-the-Line relief, dropping the ball on the imaginary line segment A-B;
- Drop the ball in the Drop Zone;
- Stroke-and-Distance relief.

### Ball 2

Ball 2 landed on the green, but then bounced into the Out of Bounds area behind the green. The only option for relief, which incurs a 1-shot penalty is:

- Stroke-and-Distance relief.

### Ball 3

Ball 3 landed on the green, but then bounced into the water of the yellow penalty area NPZ. The options for relief, both of which incur a 1-shot penalty are:

- Drop the ball in the Drop Zone;
- Stroke-and-Distance relief.

You cannot use Back-on-the-Line relief by dropping the ball on the imaginary line segment C-D (point C is where the ball last crossed the Yellow Penalty Area NPZ boundary) as the whole of this line segment is in the Yellow Penalty Area NPZ;

## Ball 4

Ball 4 landed directly in the water of the yellow penalty area NPZ and its trajectory carried it over the green. The options for relief, all of which incur a 1-shot penalty are:

- Back-on-the-Line relief, dropping the ball on the imaginary line segment E-F (point E is where the ball last crossed the Yellow Penalty Area NPZ boundary). Obviously you are not allowed to drop in the water and you are not allowed to drop the ball on the green or its surrounds (fringe);
- Drop the ball in the Drop Zone;
- Stroke-and-Distance relief.

## Relief from the Wall Surrounding the Green

- **If your ball touches the wall** it is in the YELLOW Penalty Area NPZ and has crossed it where it is located, as such you **MUST** take relief, proceeding as for balls 3 and 4 above.
- **If the ball does not touch the wall** and the wall would interfere with your intended swing or stance you **MUST**, without penalty, take relief by dropping your ball not nearer the hole within 1 club-length of the nearest point of relief. **You must NOT drop the ball on the green, but you may drop it on the fringe of the green.** Note that the nearest point of relief may be on the opposite side of the lake.

## Ball on the Bridge Leading Onto the Green

The stone bridge leading onto the green is NOT part of the no-play zone, otherwise it would be impossible to walk over it without incurring a penalty, since there is a notice requesting you not to enter the Yellow Penalty Area NPZ. The bridge is an immovable obstruction that is in a Yellow Penalty Area, hence your ball on the bridge is in the Penalty Area, so the only option that does not incur a penalty is:

- Play the ball as it lies;

If you do not want to risk damaging your club by playing off the stone bridge your relief options, at the cost of a 1-stroke penalty, would be:

- Stroke-and-Distance relief;
- Drop Zone.
- Back-on-the-Line relief. However this would almost certainly end up in the out of bounds behind the green and as such is probably not a realistic option).

## Ball in the RED Penalty Area

The Drop Zone is there only for balls that come to rest in the YELLOW Penalty Area NPZ and the YELLOW Penalty Area by the bridge, hence if your ball is in the RED Penalty area you do NOT have the option to use the Drop Zone. The options for relief, all of which incur a 1-shot penalty are:

- Back-on-the-Line relief;
- Lateral relief;
- Stroke-and-Distance relief.